



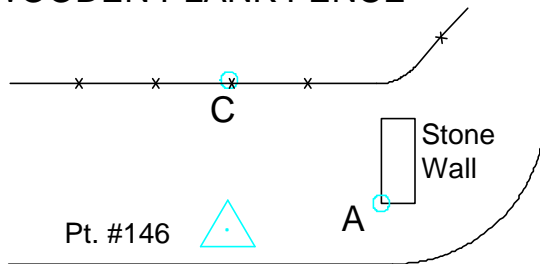
Photo Science, Inc.

# CONTROL REFERENCE SUMMARY

<b>Project Name:</b> Woodford County GIS		<b>Agency:</b> VMWC Planning	
<b>Quad Sheet:</b> Keene	<b>County:</b> Woodford	<b>State:</b> KY	<b>Date Set:</b> 10/1/2004
<b>Station:</b> 146	<b>Type of Mark:</b> Concrete Monument	<b>Stamping on Mark:</b> 146	<b>Established By:</b> Photo Science, Inc.
<b>Elev (USFeet)</b> 898.35	<b>Elev (M):</b> 273.818	<b>Datum:</b> NAVD88	
<b>Northing (USFeet)</b> 166,642.55	<b>Easting (USFeet)</b> 1,505,026.52	<b>Datum:</b> KY North	
<b>Northing (M)</b> 50,792.751	<b>Easting (M)</b> 458,733.001	<b>Datum:</b> KY North	
<b>Latitude:</b> 37°57'23.97142"N	<b>Longitude:</b> 84°43'10.42602"W	<b>Datum:</b> NAD83	
<b>Ahead Station:</b>	<b>Ahead Azimuth:</b> °   '   "	<b>Ahead Distance:</b>	
<b>Back Station:</b> 146 AZ	<b>Back Azimuth:</b> 195 ° 45 ' 17 "	<b>Back Distance:</b> 693.07	
<b>Data Entry:</b> GB	<b>Checked By:</b> MEM	<b>Date:</b> 11/30/2004	

- A: 17.8' TO CORNER OF STONE ENT. WALL
- B: 27.4' TO CORNER OF STONE ENT. WALL
- C: 16.0' TO WOODEN PLANK FENCE

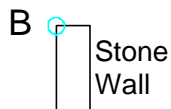
## Point #146



Pt. #146



Oak Hill  
Subdivision



HWY 33

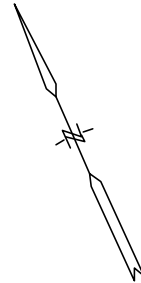




Photo Science, Inc.

# CONTROL REFERENCE SUMMARY

<b>Project Name:</b> Woodford County GIS		<b>Agency:</b> VMWC Planning	
<b>Quad Sheet:</b> Keene	<b>County:</b> Woodford	<b>State:</b> KY	<b>Date Set:</b> 10/1/2004
<b>Station:</b> 146 AZ	<b>Type of Mark:</b> Concrete Monument	<b>Stamping on Mark:</b> 146 AZ	<b>Established By:</b> Photo Science, Inc.
<b>Elev (USFeet)</b> 904.52	<b>Elev (M):</b> 275.698	<b>Datum:</b> NAVD88	
<b>Northing (USFeet)</b> 165,975.52	<b>Easting (USFeet)</b> 1,504,838.34	<b>Datum:</b> KY North	
<b>Northing (M)</b> 50,589.440	<b>Easting (M)</b> 458,675.643	<b>Datum:</b> KY North	
<b>Latitude:</b> 37°57'17.36792"N	<b>Longitude:</b> 84°43'12.73297"W	<b>Datum:</b> NAD83	
<b>Ahead Station:</b> 146	<b>Ahead Azimuth:</b> 15 ° 45' 17 "	<b>Ahead Distance:</b> 693.07	
<b>Back Station:</b>	<b>Back Azimuth:</b> ° ' "	<b>Back Distance:</b>	
<b>Data Entry:</b> GB	<b>Checked By:</b> MEM	<b>Date:</b> 11/30/2004	

- A: 22.0' TO CENTER OF HWY 33
- B: 138.8' TO A 12" OSAGE ORANGE TREE
- C: 7.5' TO PLANK FENCE

## Point #146 AZ

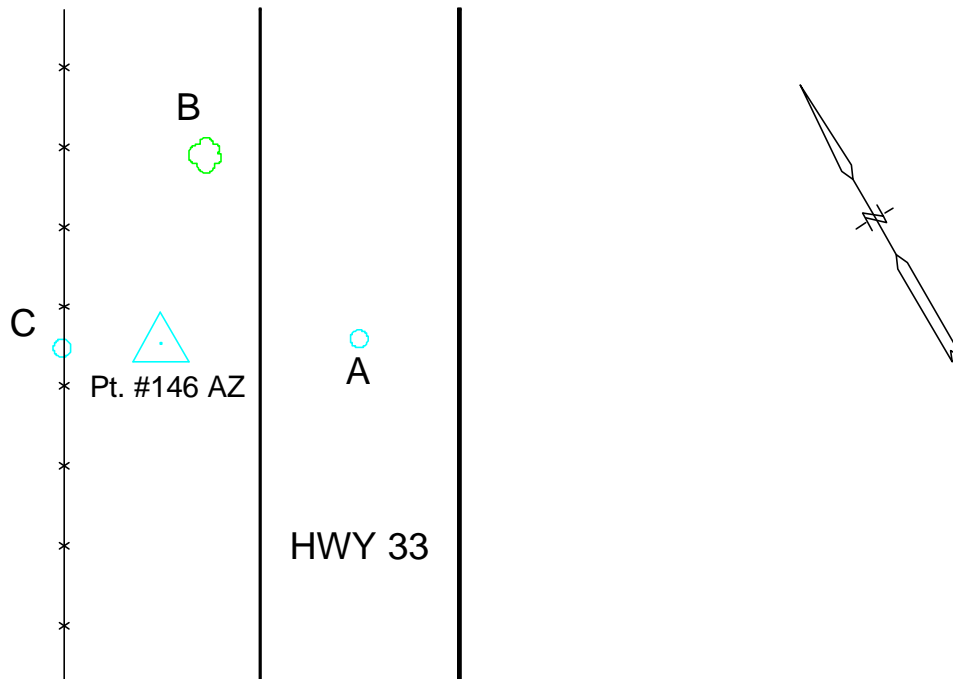




Photo Science, Inc.

# CONTROL REFERENCE SUMMARY

<b>Project Name:</b> Woodford County GIS		<b>Agency:</b> VMWC Planning	
<b>Quad Sheet:</b> Keene	<b>County:</b> Woodford	<b>State:</b> KY	<b>Date Set:</b> 10/1/2004
<b>Station:</b> 147	<b>Type of Mark:</b> Concrete Monument	<b>Stamping on Mark:</b> 147	<b>Established By:</b> Photo Science, Inc.
<b>Elev (USFeet)</b> 865.74	<b>Elev (M):</b> 263.878	<b>Datum:</b> NAVD88	
<b>Northing (USFeet)</b> 171,619.84	<b>Easting (USFeet)</b> 1,506,884.35	<b>Datum:</b> KY North	
<b>Northing (M)</b> 52,309.832	<b>Easting (M)</b> 459,299.268	<b>Datum:</b> KY North	
<b>Latitude:</b> 37°58'13.26825"N	<b>Longitude:</b> 84°42'47.54276"W	<b>Datum:</b> NAD83	
<b>Ahead Station:</b>	<b>Ahead Azimuth:</b> °   '   "	<b>Ahead Distance:</b>	
<b>Back Station:</b> 147 AZ	<b>Back Azimuth:</b> 86 ° 03 ' 37 "	<b>Back Distance:</b> 656.69	
<b>Data Entry:</b> GB	<b>Checked By:</b> MEM	<b>Date:</b> 11/30/2004	

- A: 47.0' TO TELEPHONE POLE # 00323
- B: 20.5' TO CENTER OF DELANEY FERRY ROAD
- C: 79.3' TO GATE POST @ FIRE GATE #79

## Point #147

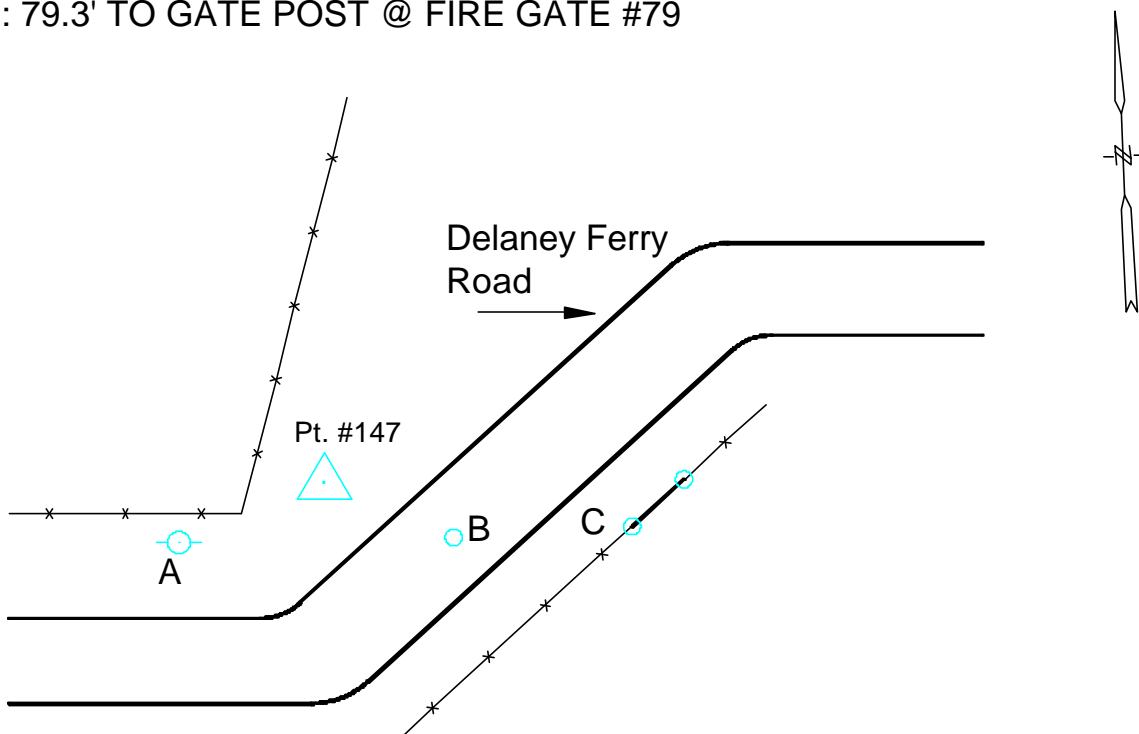




Photo Science, Inc.

# CONTROL REFERENCE SUMMARY

<b>Project Name:</b> Woodford County GIS		<b>Agency:</b> VMWC Planning	
<b>Quad Sheet:</b> Keene	<b>County:</b> Woodford	<b>State:</b> KY	<b>Date Set:</b> 10/1/2004
<b>Station:</b> 147 AZ	<b>Type of Mark:</b> Concrete Monument	<b>Stamping on Mark:</b> 147 AZ	<b>Established By:</b> Photo Science, Inc.
<b>Elev (USFeet)</b> 849.47	<b>Elev (M):</b> 258.919	<b>Datum:</b> NAVD88	
<b>Northing (USFeet)</b> 171,664.96	<b>Easting (USFeet)</b> 1,507,539.49	<b>Datum:</b> KY North	
<b>Northing (M)</b> 52,323.584	<b>Easting (M)</b> 459,498.956	<b>Datum:</b> KY North	
<b>Latitude:</b> 37°58'13.74674"N	<b>Longitude:</b> 84°42'39.36434"W	<b>Datum:</b> NAD83	
<b>Ahead Station:</b> 147	<b>Ahead Azimuth:</b> 266° 03' 37 "	<b>Ahead Distance:</b> 656.69	
<b>Back Station:</b>	<b>Back Azimuth:</b> ° ' "	<b>Back Distance:</b>	
<b>Data Entry:</b> GB	<b>Checked By:</b> MEM	<b>Date:</b> 11/30/2004	

- A: 91.8' TO MAILBOX @ 3530
- B: 75.3' TO FENCE CORNER @ DRIVE
- C: 18.0' TO CENTER OF DELANEY FERRY ROAD

## Point #147 AZ

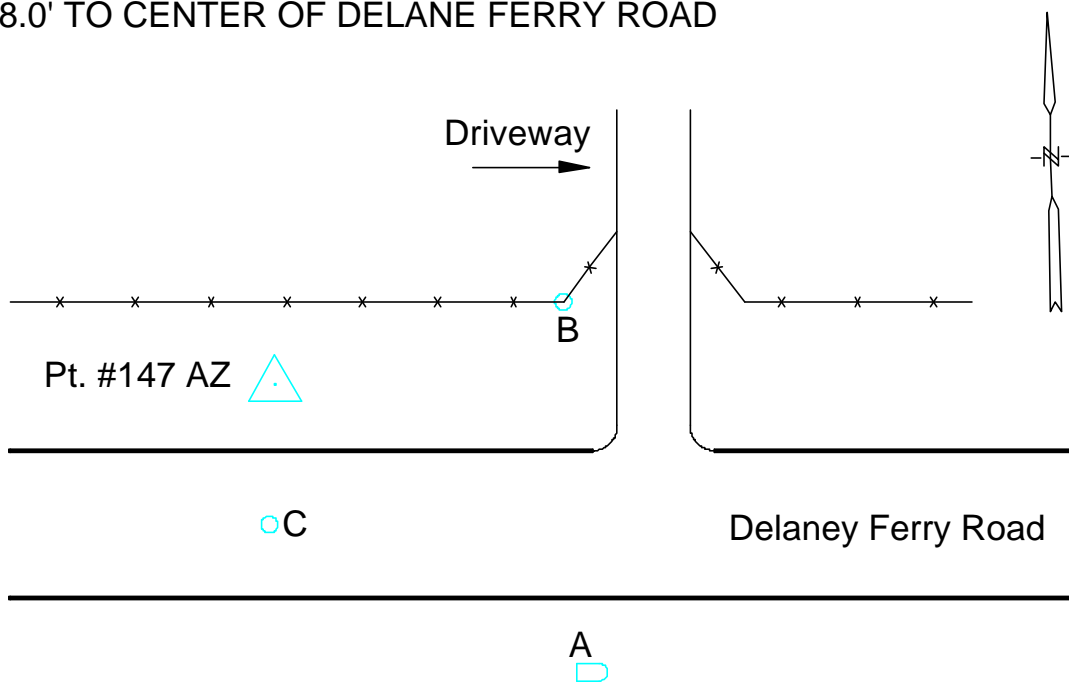




Photo Science, Inc.

# CONTROL REFERENCE SUMMARY

<b>Project Name:</b> Woodford County GIS		<b>Agency:</b> VMWC Planning	
<b>Quad Sheet:</b> Keene	<b>County:</b> Woodford	<b>State:</b> KY	<b>Date Set:</b> 10/1/2004
<b>Station:</b> 148	<b>Type of Mark:</b> Concrete Monument	<b>Stamping on Mark:</b> 148	<b>Established By:</b> Photo Science, Inc.
<b>Elev (USFeet)</b> 822.91	<b>Elev (M):</b> 250.823	<b>Datum:</b> NAVD88	
<b>Northing (USFeet)</b> 174,167.40	<b>Easting (USFeet)</b> 1,516,055.37	<b>Datum:</b> KY North	
<b>Northing (M)</b> 53,086.330	<b>Easting (M)</b> 462,094.601	<b>Datum:</b> KY North	
<b>Latitude:</b> 37°58'38.89292"N	<b>Longitude:</b> 84°40'53.16644"W	<b>Datum:</b> NAD83	
<b>Ahead Station:</b>	<b>Ahead Azimuth:</b> °   '   "	<b>Ahead Distance:</b>	
<b>Back Station:</b> 148 AZ	<b>Back Azimuth:</b> 338 ° 35 ' 54 "	<b>Back Distance:</b> 815.53	
<b>Data Entry:</b> GB	<b>Checked By:</b> MEM	<b>Date:</b> 11/30/2004	

- A: 16.1' TO END OF GUARDRAIL
- B: 24.5' TO "35 MPH" SIGN
- C: 18.5' TO CENTER OF HWY 169

## Point #148

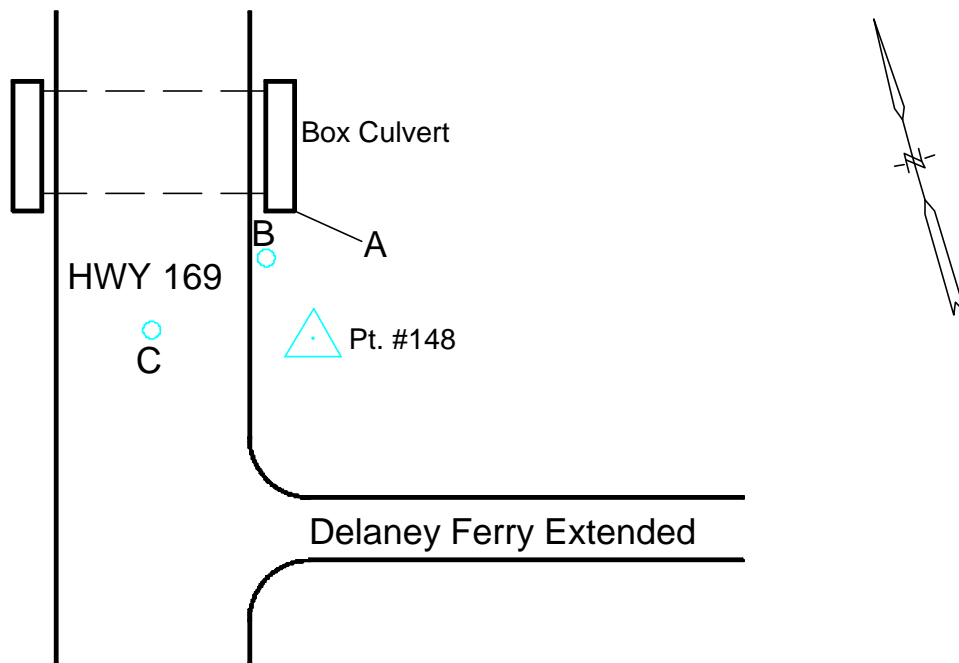




Photo Science, Inc.

# CONTROL REFERENCE SUMMARY

<b>Project Name:</b> Woodford County GIS		<b>Agency:</b> VMWC Planning	
<b>Quad Sheet:</b> Keene	<b>County:</b> Woodford	<b>State:</b> KY	<b>Date Set:</b> 10/1/2004
<b>Station:</b> 148 AZ	<b>Type of Mark:</b> Concrete Monument	<b>Stamping on Mark:</b> 148 AZ	<b>Established By:</b> Photo Science, Inc.
<b>Elev (USFeet)</b> 860.77	<b>Elev (M):</b> 262.363	<b>Datum:</b> NAVD88	
<b>Northing (USFeet)</b> 174,926.69	<b>Easting (USFeet)</b> 1,515,757.78	<b>Datum:</b> KY North	
<b>Northing (M)</b> 53,317.762	<b>Easting (M)</b> 462,003.895	<b>Datum:</b> KY North	
<b>Latitude:</b> 37°58'46.38522"N	<b>Longitude:</b> 84°40'56.92752"W	<b>Datum:</b> NAD83	
<b>Ahead Station:</b> 148	<b>Ahead Azimuth:</b> 158 ° 35' 54 "	<b>Ahead Distance:</b> 815.53	
<b>Back Station:</b>	<b>Back Azimuth:</b> ° ' "	<b>Back Distance:</b>	
<b>Data Entry:</b> GB	<b>Checked By:</b> MEM	<b>Date:</b> 11/30/2004	

- A: 17.4' TO CENTER OF HWY 169
- B: 40.5' TO PLANK FENCE
- C: 9.0' TO A TELEPHONE POLE

## Point #148 AZ

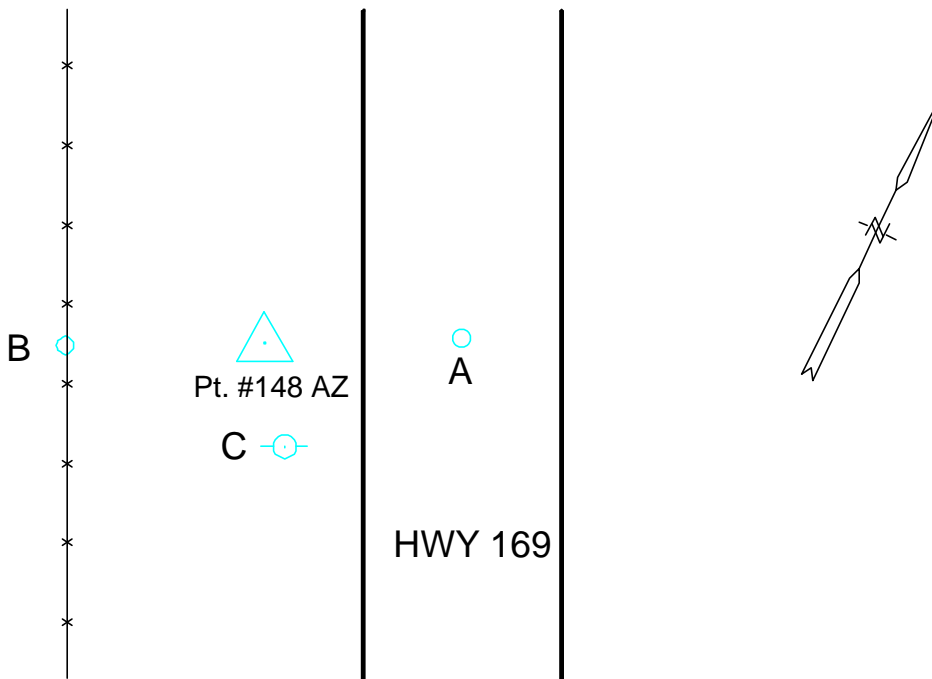




Photo Science, Inc.

# CONTROL REFERENCE SUMMARY

<b>Project Name:</b> Woodford County GIS		<b>Agency:</b> VMWC Planning	
<b>Quad Sheet:</b> Keene	<b>County:</b> Woodford	<b>State:</b> KY	<b>Date Set:</b> 10/1/2004
<b>Station:</b> 149	<b>Type of Mark:</b> Concrete Monument	<b>Stamping on Mark:</b> 149	<b>Established By:</b> Photo Science, Inc.
<b>Elev (USFeet)</b> 896.23	<b>Elev (M):</b> 273.171	<b>Datum:</b> NAVD88	
<b>Northing (USFeet)</b> 165,951.00	<b>Easting (USFeet)</b> 1,513,801.52	<b>Datum:</b> KY North	
<b>Northing (M)</b> 50,581.966	<b>Easting (M)</b> 461,407.626	<b>Datum:</b> KY North	
<b>Latitude:</b> 37°57'17.56283"N	<b>Longitude:</b> 84°41'20.82550"W	<b>Datum:</b> NAD83	
<b>Ahead Station:</b>	<b>Ahead Azimuth:</b> °   '   "	<b>Ahead Distance:</b>	
<b>Back Station:</b> 149 AZ	<b>Back Azimuth:</b> 210 ° 52 ' 16 "	<b>Back Distance:</b> 473.88	
<b>Data Entry:</b> GB	<b>Checked By:</b> MEM	<b>Date:</b> 11/30/2004	

- A: 11.2' TO CENTER OF KIDDS MILL ROAD
- B: 60.3' TO A 15" ELM TREE
- C: 63.6' TO A 10" HACKBERRY TREE

## Point #149

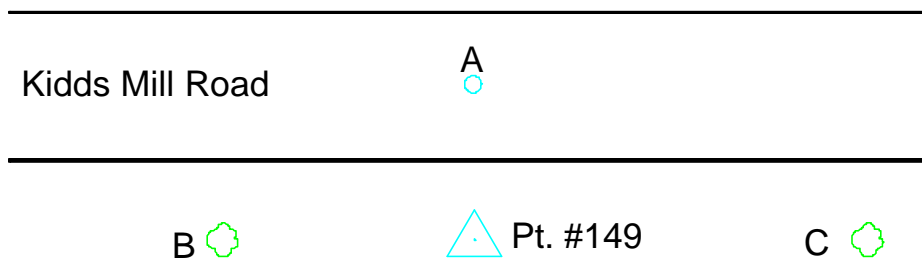
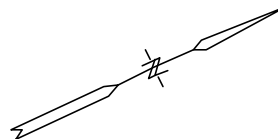




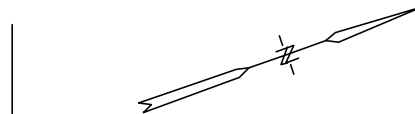
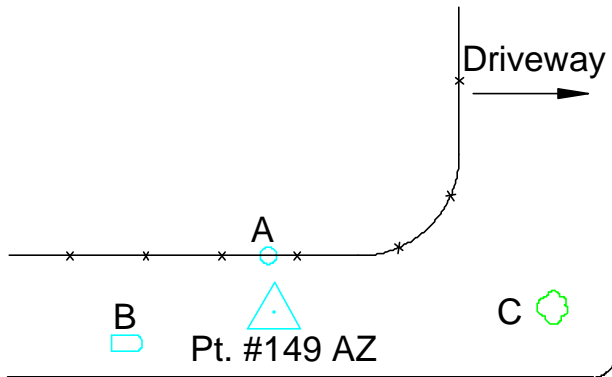
Photo Science, Inc.

# CONTROL REFERENCE SUMMARY

<b>Project Name:</b> Woodford County GIS		<b>Agency:</b> VMWC Planning	
<b>Quad Sheet:</b> Keene	<b>County:</b> Woodford	<b>State:</b> KY	<b>Date Set:</b> 10/1/2004
<b>Station:</b> 149 AZ	<b>Type of Mark:</b> Concrete Monument	<b>Stamping on Mark:</b> 149 AZ	<b>Established By:</b> Photo Science, Inc.
<b>Elev (USFeet)</b> 870.58	<b>Elev (M):</b> 265.353	<b>Datum:</b> NAVD88	
<b>Northing (USFeet)</b> 165,544.26	<b>Easting (USFeet)</b> 1,513,558.37	<b>Datum:</b> KY North	
<b>Northing (M)</b> 50,457.991	<b>Easting (M)</b> 461,333.514	<b>Datum:</b> KY North	
<b>Latitude:</b> 37°57'13.53052"N	<b>Longitude:</b> 84°41'23.83700"W	<b>Datum:</b> NAD83	
<b>Ahead Station:</b> 149	<b>Ahead Azimuth:</b> 30 ° 52' 16 "	<b>Ahead Distance:</b> 473.88	
<b>Back Station:</b>	<b>Back Azimuth:</b> ° ' "	<b>Back Distance:</b>	
<b>Data Entry:</b> GB	<b>Checked By:</b> MEM	<b>Date:</b> 11/30/2004	

- A: 20.1' TO PLANK FENCE
- B: 11.0' TO MAILBOX @ 1214
- C: 23.4' TO A 3" POPLAR TREE

## Point #149 AZ



Kidds Mill Road



Photo Science, Inc.

# CONTROL REFERENCE SUMMARY

<b>Project Name:</b> Woodford County GIS		<b>Agency:</b> VMWC Planning	
<b>Quad Sheet:</b> Keene	<b>County:</b> Woodford	<b>State:</b> KY	<b>Date Set:</b> 10/1/2004
<b>Station:</b> 150	<b>Type of Mark:</b> Concrete Monument	<b>Stamping on Mark:</b> 150	<b>Established By:</b> Photo Science, Inc.
<b>Elev (USFeet)</b> 905.15	<b>Elev (M):</b> 275.890	<b>Datum:</b> NAVD88	
<b>Northing (USFeet)</b> 181,295.40	<b>Easting (USFeet)</b> 1,519,048.89	<b>Datum:</b> KY North	
<b>Northing (M)</b> 55,258.948	<b>Easting (M)</b> 463,007.028	<b>Datum:</b> KY North	
<b>Latitude:</b> 37°59'49.49507"N	<b>Longitude:</b> 84°40'16.18759"W	<b>Datum:</b> NAD83	
<b>Ahead Station:</b>	<b>Ahead Azimuth:</b> °   '   "	<b>Ahead Distance:</b>	
<b>Back Station:</b> 150 AZ	<b>Back Azimuth:</b> 50 ° 15 ' 37 "	<b>Back Distance:</b> 862.77	
<b>Data Entry:</b> GB	<b>Checked By:</b> MEM	<b>Date:</b> 11/30/2004	

- A: 12.8' TO CENTER OF SHANNON RUN ROAD
- B: 5.4' TO FENCE
- C: 53.1' TO A 20" WALNUT TREE

## Point #150

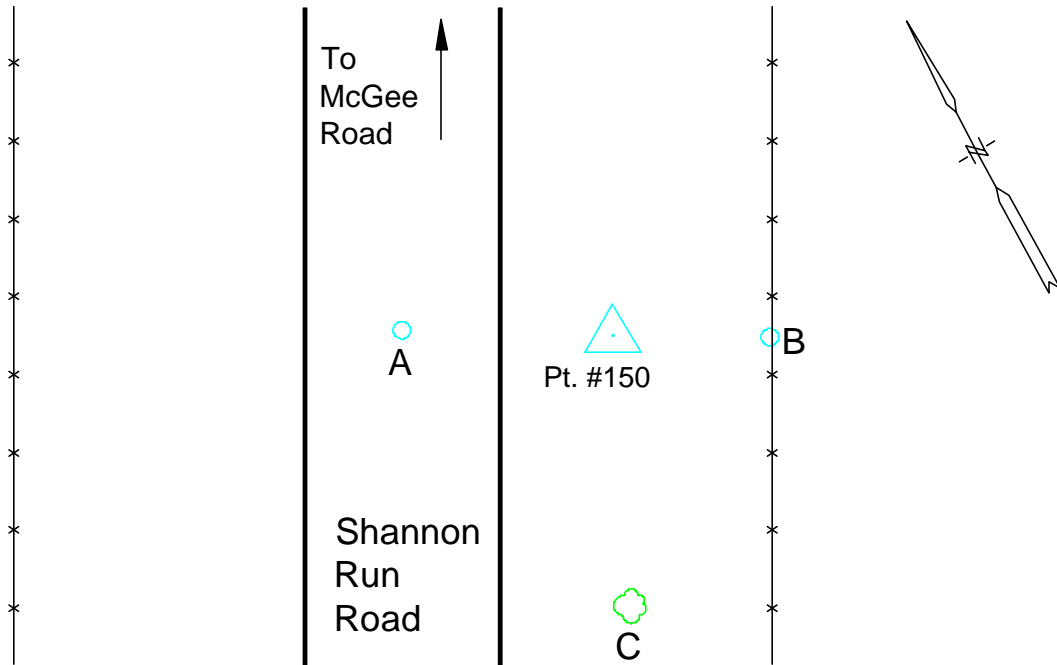




Photo Science, Inc.

# CONTROL REFERENCE SUMMARY

<b>Project Name:</b> Woodford County GIS		<b>Agency:</b> VMWC Planning	
<b>Quad Sheet:</b> Keene	<b>County:</b> Woodford	<b>State:</b> KY	<b>Date Set:</b> 10/1/2004
<b>Station:</b> 150 AZ	<b>Type of Mark:</b> Concrete Monument	<b>Stamping on Mark:</b> 150 AZ	<b>Established By:</b> Photo Science, Inc.
<b>Elev (USFeet)</b> 931.64	<b>Elev (M):</b> 283.964	<b>Datum:</b> NAVD88	
<b>Northing (USFeet)</b> 181,846.97	<b>Easting (USFeet)</b> 1,519,712.32	<b>Datum:</b> KY North	
<b>Northing (M)</b> 55,427.067	<b>Easting (M)</b> 463,209.242	<b>Datum:</b> KY North	
<b>Latitude:</b> 37°59'54.97757"N	<b>Longitude:</b> 84°40'07.93102"W	<b>Datum:</b> NAD83	
<b>Ahead Station:</b> 150	<b>Ahead Azimuth:</b> 230 ° 15' 37 "	<b>Ahead Distance:</b> 862.77	
<b>Back Station:</b>	<b>Back Azimuth:</b> ° ' "	<b>Back Distance:</b>	
<b>Data Entry:</b> GB	<b>Checked By:</b> MEM	<b>Date:</b> 11/30/2004	

- A: 94.3' TO CORNER FENCE POST
- B: 13.1' TO FENCE
- C: 59.8' TO "STOP" SIGN

## Point #150 AZ

